

Look for the Consonant B



B is for bear

.....

A	N	R	T	E	B
---	---	---	---	---	---

.....

X	M	B	A	P	F
---	---	---	---	---	---

.....

B	A	V	V	I	W
---	---	---	---	---	---

.....

D	A	Q	A	B	A
---	---	---	---	---	---

Look for the Consonant C



C is for cat

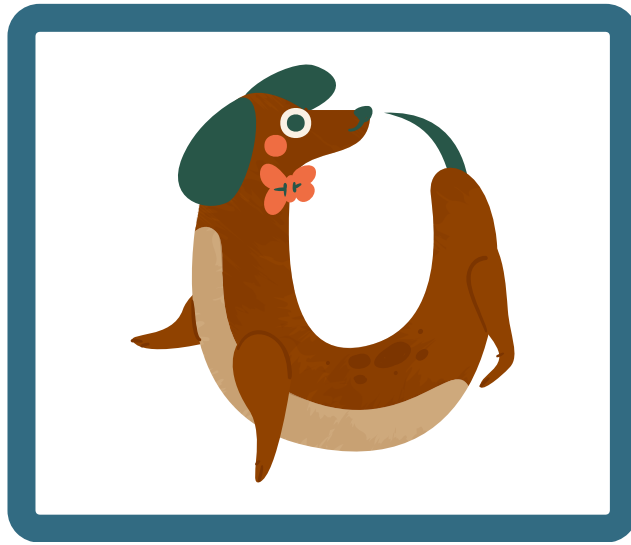
.....
Z G C T A O

.....
N M R O L C

.....
R D Q C I M

.....
C V G F S W

Look for the Consonant D



D is for dog

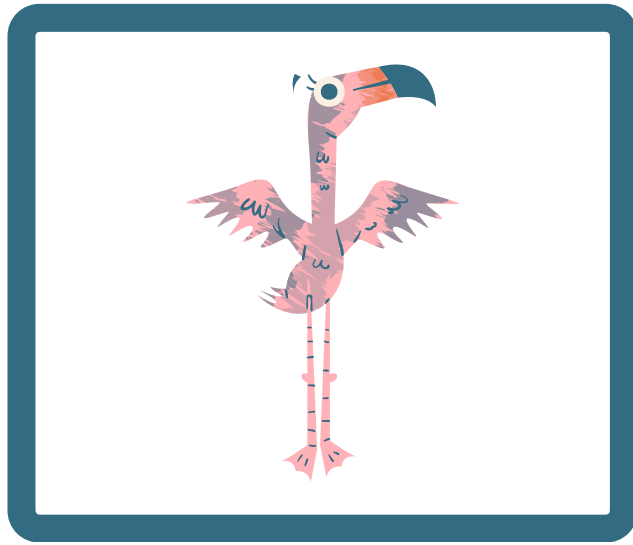
C G B A D O

D G T Q M I

G C V D U M

A F Y S B D

Look for the Consonant F



F is for flamingo

.....
P L Y Q F E

.....
E G F R P W

.....
F E L T H N

.....
T F E S A Z

Look for the Consonant G



G is for giraffe

.....

D	H	F	G	S	R
---	---	---	---	---	---

.....

S	G	A	W	Q	W
---	---	---	---	---	---

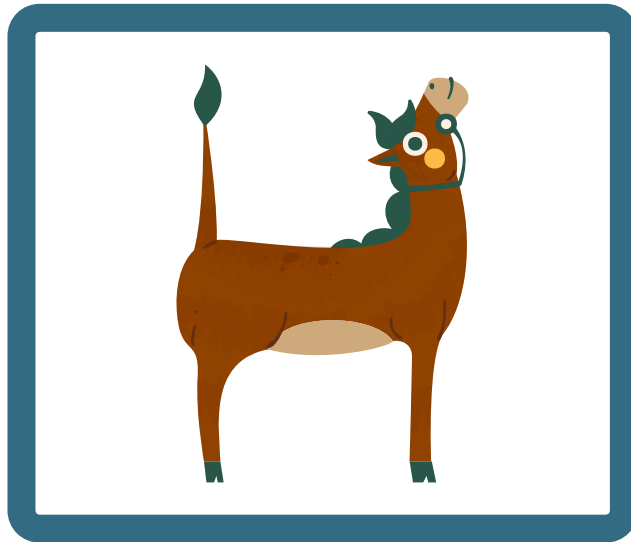
.....

D	H	Q	R	G	S
---	---	---	---	---	---

.....

G	F	B	Z	D	H
---	---	---	---	---	---

Look for the Consonant H



H is for horse

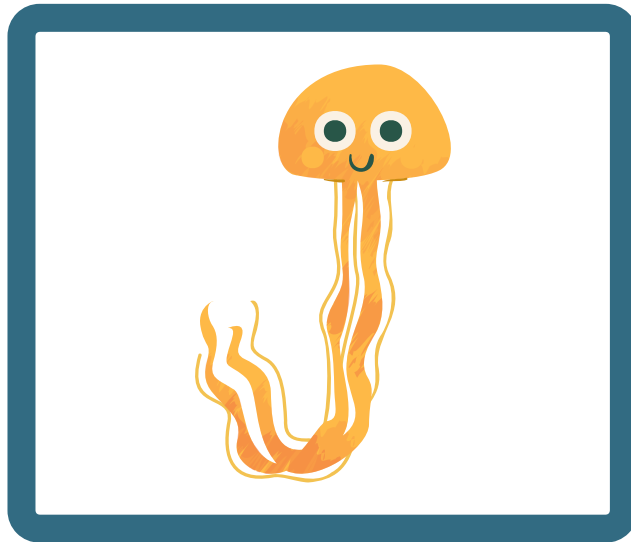
N M J K U H

F H K Y X Q

T E F H E N

J H M V A Z

Look for the Consonant J



J is for jellyfish

J S I O P H

Q W S A J V

D A Y U H J

J K N R C T

Look for the Consonant K



K is for kangaroo

.....

G	T	F	K	M	E
---	---	---	---	---	---

.....

E	F	G	H	I	K
---	---	---	---	---	---

.....

E	K	Q	A	X	Z
---	---	---	---	---	---

.....

T	Y	J	K	C	B
---	---	---	---	---	---

Look for the Consonant L



L is for lion

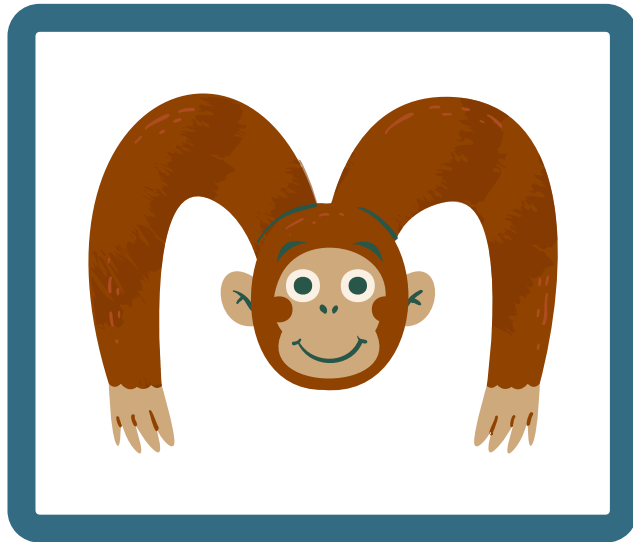
.....
L E I J T F

.....
J F L I O N

.....
Y H M B G L

.....
L I J E F A

Look for the Consonant M



M is for monkey

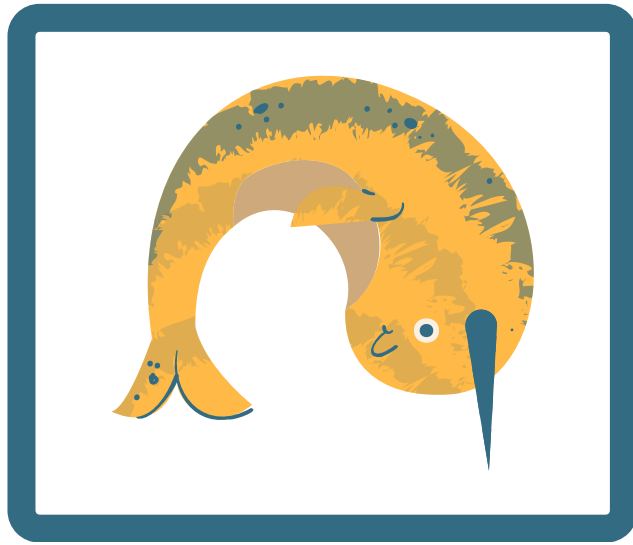
N M W X Y B

K W F G N M

N K M U O L

H T M E W N

Look for the Consonant N



N is for narwhal

M M W V N B

Y N M W E R

O K Q N T H

N M W E V S

Look for the Consonant P



P is for panda

.....
B R P D Q O

.....
B F R J P M

.....
P R B D F Z

.....
Y U I L P R

Look for the Consonant Q



Q is for quail

.....

O	U	D	V	Q	A
---	---	---	---	---	---

.....

Q	O	D	B	U	D
---	---	---	---	---	---

.....

T	D	Q	R	O	L
---	---	---	---	---	---

.....

W	Q	F	G	O	D
---	---	---	---	---	---

Look for the Consonant S



S is for squirrel

.....

C	S	R	H	B	N
---	---	---	---	---	---

.....

Y	L	U	S	C	Q
---	---	---	---	---	---

.....

G	H	N	S	T	Y
---	---	---	---	---	---

.....

N	H	J	M	N	S
---	---	---	---	---	---

Look for the Consonant T



T is for tiger

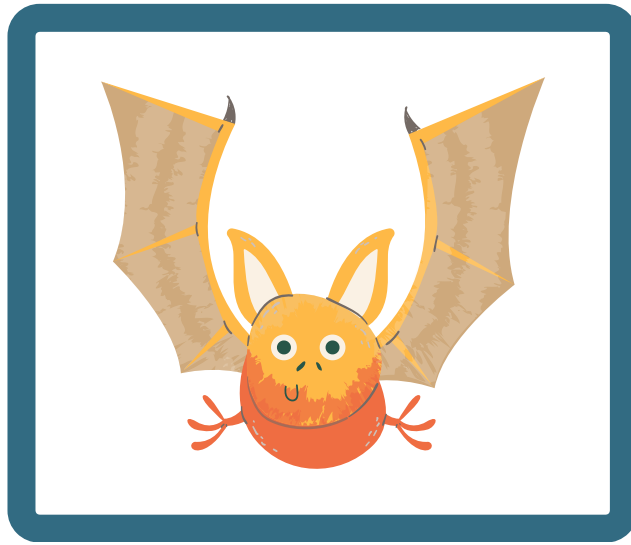
H Y T D S H

T L K M X S

D F B V T Y

Q A T C Z B

Look for the Consonant V



V is for vampire bat

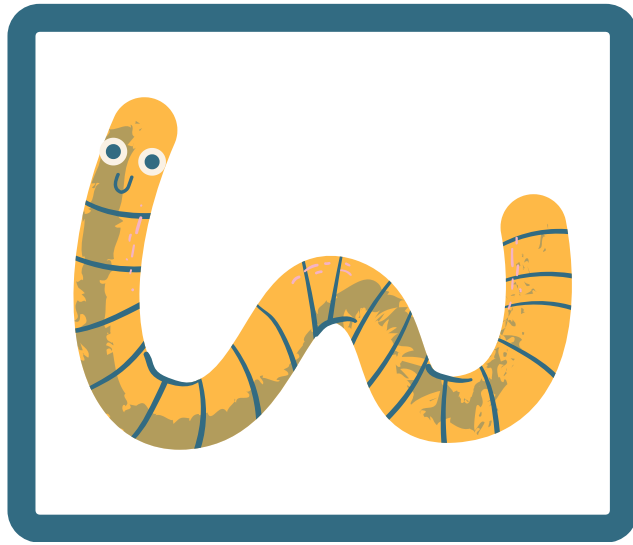
.....
Y V B N U W

.....
W B N V Y U

.....
U J V Y T W

.....
E A Z B N V

Look for the Consonant W



W is for worm

.....

W	V	M	N	X	Y
---	---	---	---	---	---

.....

B	M	N	V	W	R
---	---	---	---	---	---

.....

G	N	V	W	B	R
---	---	---	---	---	---

.....

M	N	W	Y	V	V
---	---	---	---	---	---

Look for the Consonant X



X is for xenarthra

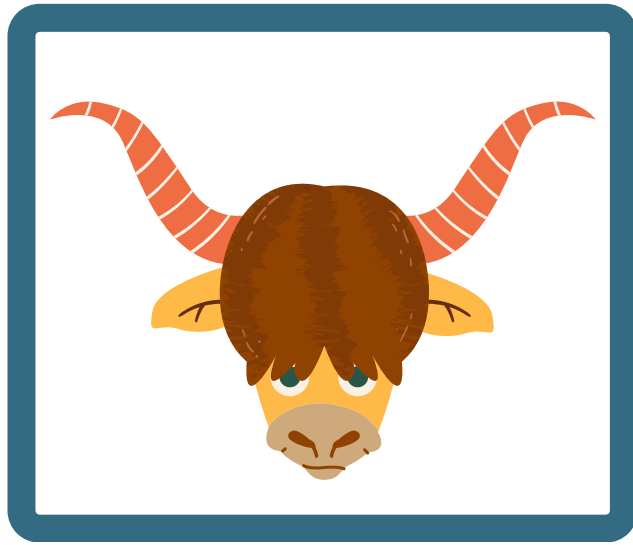
.....
Y S V W X B

.....
C X Y V W M

.....
V H X J K I

.....
X Y Z W V K

Look for the Consonant Y



Y is for yak

.....

Y	X	V	B	T	U
---	---	---	---	---	---

.....

T	H	X	Y	Z	J
---	---	---	---	---	---

.....

R	S	Y	U	V	M
---	---	---	---	---	---

.....

Y	R	P	O	B	L
---	---	---	---	---	---

Look for the Consonant Z



Z is for zebra

R Z S W F G

N Z B T H W

F V B N Q Z

C T G Q E Z